

How to set up Digital Clear Gloss Varnish

Setting-up InDesign for printing with clear dry ink

1. In InDesign, add a new layer in the Layers window (see 'A')
 - Name the new layer (we use 'Clear Layer')
 - The Clear Layer should be the very first at the top
2. Add a new colour in the Swatches window and name it. We use 'Clear' (see 'B')
 - Designate the Colour Type as 'Spot'
 - Set the Colour Mode to C0 / M100 / Y0 / K0

Important:

The swatch name could be anything you want it to be as long as you are consistent and use the same name throughout all other files (Photoshop, Illustrator, etc) which you import/place into your InDesign file. The swatch name is case sensitive.

Creating masks for spot or flood effects in InDesign

1. Draw a shape or select text that will receive clear dry ink. Make sure all elements to print with clear are situated in the Clear Layer.
 - Fill your shape with the new 'Clear' colour swatch
 - Select Window > Output > Attributes
 - Tick the appropriate checkbox Overprint Fill and/or Stroke

Note: This must be checked for every element to print with clear (see 'C')

Bringing in graphics from Adobe Illustrator

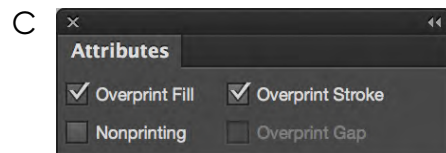
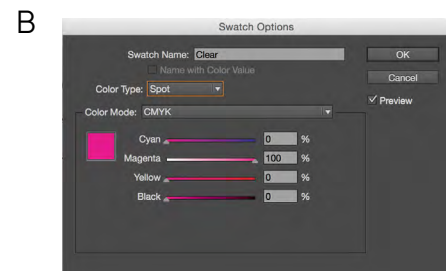
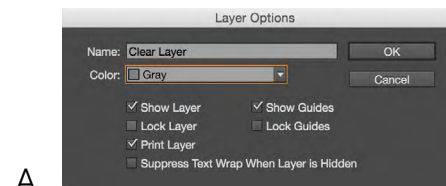
Vector graphics that are created in Adobe Illustrator can be copied and pasted into InDesign and designated to print with clear dry ink as a watermark or to print over colours or photographs.

1. Copy and paste a graphic from Illustrator into your InDesign document.
2. Designate the fill and/or stroke to 'Clear' in your swatches.
3. Ensure all elements to be printed in clear dry ink are situated in the 'Clear Layer'.
4. With the graphic selected, select Window > Output > Attributes > Overprint Fill and/or Stroke (see 'C'). The imported graphic will print (overprint) with clear dry ink.

Tinted effects

A tinted effect is created by layering two identical objects on top of each other. The objects on the top layer will print with clear dry ink allowing the colour from the object below to show through. To start, follow the basic set-up for the layer and clear dry ink swatch.

1. Paste or create a vector graphic
2. Apply a colour or tint to it
3. Copy your graphic and Paste in Place on the Clear Layer. It is important that the graphic to print in clear dry ink be located on your Clear Layer.
4. Apply the colour Clear from the colour palette.
5. Select Window > Output > Attributes > Overprint Fill and/or Stroke.



How to set up Digital Clear Gloss Varnish

Creating raster effects with Adobe Photoshop

There are several ways of creating masks with gradient fills, patterns or soft faded edges in Adobe Photoshop.

Using an existing image to highlight detailed areas

1. Open the photo you would like to enhance with clear dry ink.
2. Convert document to Grayscale - Image > Mode > Grayscale, and discard colour information (see 'D').
3. Next, convert to Duotone - Image > Mode > Duotone (see 'E')
 - Select 'Monotone'
 - Click on Ink 1 and change the colour to C0 / M100 / Y0 / K0 (see 'F')
 - Name Ink 1 as Clear

Note: It is important to use the same colour and colour swatch you chose in your InDesign file for your Clear swatch.
4. Save as a new file and name it (for example, filename_Clear.psd).
5. Mask out any area you do not want to receive clear dry ink.

Creating masks with soft or faded edges using the pen tool (Monotone option)

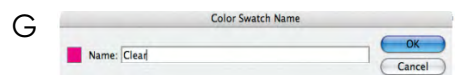
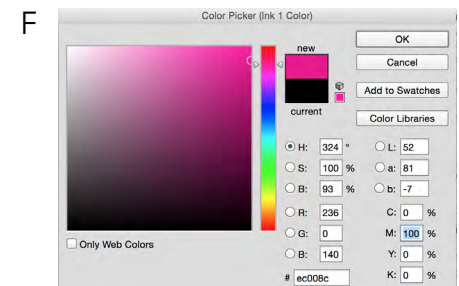
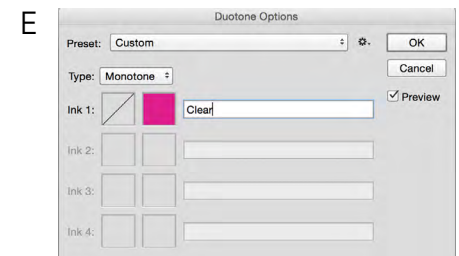
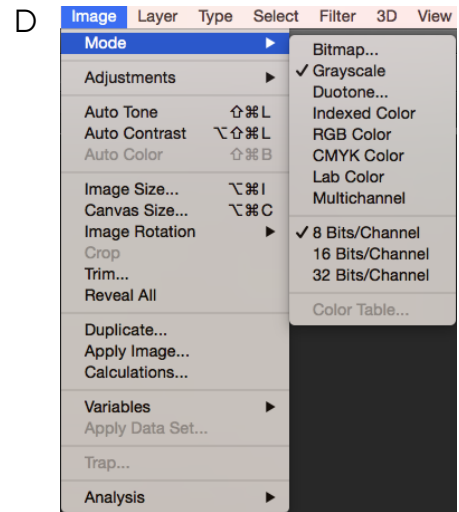
1. Open your image in Adobe Photoshop.
2. Using the pen tool trace the image or draw a shape.
3. Select your path, feather the edge, use the eraser or gradient fill tool, etc.
4. Create a new layer and fill your shape with black.
5. Convert file to Monotone, make sure to name Ink 1 the same as clear swatch in InDesign.
6. Delete your background image.
7. Save your monotone file as an EPS or PSD.

Creating a spot of alpha channel

1. Open the image to receive clear in Adobe Photoshop.
2. Create a new path or select a shape.
3. With your selected shape add a New Spot Channel (see 'G').
 - Name the New Spot Channel the same name as your clear ink swatch in InDesign (we have used 'Clear').
 - Select Colour to C0 / M100 / Y0 / K0
 - Set Solidity to 100% or other value as desired
4. Save as PSD or TIFF with Spot Colours included.
5. Place into InDesign on the Clear Layer. No more steps are required in InDesign.

Note:

This option may present a layering issue in InDesign since your base image and clear area are part of the same image file. If you have overlapping shapes or text assigned to print with clear on the same page we recommend using the 'Monotone' option.



How to set up Digital Clear Gloss Varnish

Pulling it all together in Adobe InDesign

Now that you have created your raster mask for clear;

1. Follow the set-up instructions for InDesign from Page 3 titles 'Setting-up InDesign for printing with clear dry ink'
2. Place your colour image on a layer below your Clear Layer
3. Copy the image
4. Paste in Place on the Clear Layer
5. Relink the file to your raster file (for example filename_Clear.psd)
6. With your graphics still selected go to Windows > Effects and choose Multiply with 100%. This prevents the image below the Clear Layer from knocking out.

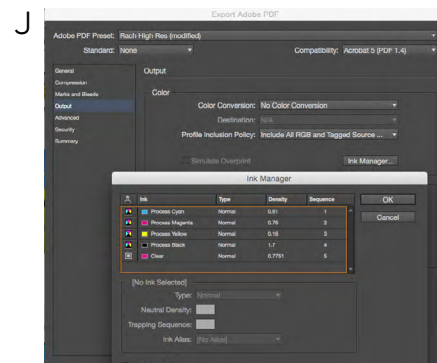
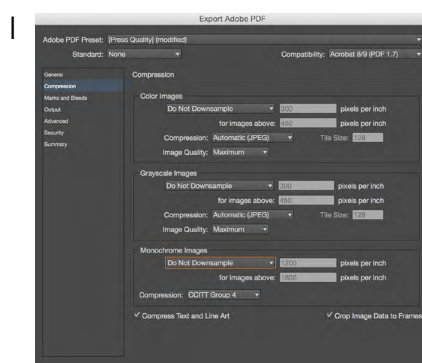
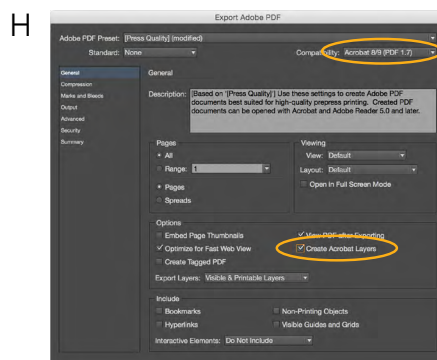
Creating a High-Res PDF

It is important to choose the correct settings when saving a PDF for printing with clear dry ink. Follow the steps below to create a PDF preset for saving high-res PDFs right out of InDesign.

1. From the Main Menu select File > Adobe PDF Presets > Press Quality and Save.
2. Select General: Compatibility > Acrobat 8/9 (PDF 1.7). On the lower right side check Create Acrobat Layers (see 'H').
3. Select Compression:
 - Colour Images > Do Not Downsample
 - Compression > JPEG
 - Images Quality > Maximum
 - Same for Grayscale images, with monochrome images select CCITT Group 4 ('I').
4. Set up Marks and Bleed (Ensure 3mm bleed, tick 'Crops' check box)
5. Select Output:
 - Colour Conversion > No Colour Conversion
 - Profile Inclusion Policy > Include All
 - RGB and Tagged source CMYK Profiles.Click on Ink Manager and make sure the box for All Spot to Process is left unchecked (see 'J').
6. Click on Save Preset and name it (such as 'Scott Digital Clear'). The next time you create a PDF from InDesign, simply select the PDF Preset you created rather than Press Quality.

Checking your PDF

1. Open your PDF in Acrobat Professional
2. From the Main Menu select, Advanced > Print Production > Output Preview. Select Simulate Overprinting. If your file is set up correctly all areas designated clear should be visible and on a separate layer.
If you move your cursor over clear areas you should see percentages.



Troubleshooting

- If the clear swatch colour has knocked out the image below, make sure that you have specified overprint, or if brought in from Adobe Photoshop, multiply has been assigned.
- For raster images brought in from Adobe Photoshop, make sure the correct name has been assigned to the colour in the Monotone Menu. Names must match between all files.
- If some areas print correctly but other parts have been knocked out, make sure the Clear Layer sits at the top of all other layers.